

THE SHOEFAR

A Publication of the Jewish Federation of Greater Chattanooga

Volume 29 Number 5 January 2016

Annual Meeting to Feature Bob Bernhardt



Bob Bernhardt

The Jewish Federation's Annual Meeting will be held on Sunday, January 17 at 7p.m. at the Jewish Cultural Center. Our keynote speaker this year is Maestro Robert Bernhardt, who will speak on the topic of "Jewish Influence on Music in Hollywood." There is no cost to attend this event.

Warren Dropkin is completing his two year term as Federation Board Chair and we will be installing Lee Brouner as our new Board Chair. All officers and board members (listed on page 5) will also begin their new terms. This year we will be honoring all of our Legacy Society members with a special candle lighting.

One of the highlights of every Annual Meeting is honoring our community's Volunteers of the Year. For over 25 years, the Federation has recognized all of our Jewish organization's honorees at the Annual Meeting with an Israel Tree certificate. We are fortunate to have so many volunteers in our Jewish community, and the Federation is appreciative of all the great work that happens in our community due to their support and commitment.

Finally, we will formally welcome our newest Federation staff member, Rebecca Peck, incoming Director of Social Services. Please plan to attend and support all of the good happenings throughout our Jewish community. A dessert reception will follow the program.

Rebecca Peck Named New Federation Social Services Director



The Federation welcomes new Social Services Director Rebecca Peck, who begins work January 18.

Rebecca received a B.S. in Music, a B.A. in Biology (with a minor in chemistry) and a Master's of Social Work (MSW) from Southern Adventist University in Collegedale. She was a member of the Phi Alpha Honor Society and was also awarded MSW Student of the Year in 2013.

Rebecca spent her Master's practicum hours working with Amy Boulware, serving the Federation's community and clients; she also worked with Philanthropy Camp and Camp Tikkun Olam for two years.

Rebecca has also worked for Johnson Mental Health Center, Partnership for Families, Children and Adults, The Salvation Army, and St. Andrews Center. Rebecca comes to the Jewish Federation from Memorial Hospital where she has been a medical social worker for the past several years. Her outgoing personality and warm, caring heart defines her character.

Please join the Federation in welcoming Rebecca to the Jewish Federation family. She will attend the Annual Meeting on Sunday, January 17 at 7p.m. at the JCC as her first official introduction to the community in her new role. In the meantime, Edie Redish, Community Nurse, will be available to assist with Social Service issues. Edie can be reached at 991-3123.

Social Services Director Boulware Says Goodbye to Federation after 13 Years



Longtime Social Services Director Amy Boulware said an emotional goodbye to the Jewish Federation at a reception in her honor Dec. 14. She assured the community that while she would no longer be an employee of the Federation, she would still be available to help make the transition to new Social Services Director Rebecca Peck as smooth as possible.

Boulware was given a commemorative glass plate which read, "It is not a person's place that accords them honor, but rather the person who accords honor to their place." For more photos of the event, please see page 11.

Chai Nite: The Most Wonderful Time of Every Other Year



Chai Nite, the Chattanooga Jewish community's favorite formal Federation event, happens again this year on Saturday, January 9 from 7:30-11:30p.m. At this very special event, guests will enjoy a delicious buffet, an open bar featuring a made-for-

Chai Nite "Chai-tini," and dancing to the music of Sound Force.

In addition to a raffle, there will also be a live auction of carefully selected items including spa, date night, football, and golf packages, dinner and dessert packages, jewelry, trips, original art, and more. Tickets are \$50 per person. Raffle ticket prices are \$25 each, 3 for \$50, or 7 for \$100. Attire is red carpet, black tie optional. RSVP a must as space is limited. *Would you or your company like to be a sponsor? See page 4 for information.*



Chai Nite 2014

SAVE THE DATE(S) Feb 21. Genetic Screening (see page 7)
Feb. 23 Israeli Wine Tasting with Noa Hadad

Jewish Federation[®] OF GREATER CHATTANOOGA P.O. Box 8947 Chattanooga, TN 37414 Change Service Requested



THE STRENGTH OF A PEOPLE
THE POWER OF A COMMUNITY

www.jewishchattanooga.com

Nonprofit Org.
U.S. Postage
PAID
Permit No. 63
Chattanooga, TN

NOTES FROM LEADERSHIP



What is the Next Step?

by *Warren Dropkin*
Outgoing Federation Board Chair
boardchair@jewishchattanooga.com

I read a quote by a woman named Kathy Heasley of Heasley & Partners that defined leadership this way: "Leadership is being bold enough to have vision and humble enough to recognize achieving it will take the efforts of many people — people who are most fulfilled when they share their gifts and talents, rather than just work. Leaders create that culture, serve that greater good, and let others soar."

I hope that over the last couple of years, while I have had the honor and privilege to serve as the chair of our Jewish Federation, I embodied leadership. I know that we definitely could not make our Federation and our community the success that it is without the work of so many. We have continued to accomplish great things in our small but powerful community. We continue to be a leader of Federations in setting an example of how to get the job done.

I need to thank so many people who have helped me over the last couple of years. First and foremost, I'd like to thank the staff at the Federation, who spend many hours making sure the work gets done. Their caring and passion for what they do, and for the members of our community, shines through every day. Thank you to Hadas and Noa, our shlichim, who brought (and bring) Israel to us, and who will always have a special place in this community's heart. Thank you to our Federation Executive Committee and Board of Directors, who take many hours out of their daily lives and put them into the success of our community. We could not be as successful as we are without their input and leadership.

There are numerous committee chairs, community leaders, and volunteers who make our community the greatest place to be. I want to thank ALL of you. Without you there is no organization, and there is no leadership.

I am excited to hand over Federation Board Chair to Lee Brouner. Lee has been involved with the Federation for a very long time, and is stepping up at an important moment in our organization. There are challenges for our organization and for our people internationally, and locally there are growing needs within our community. I hope that when he calls upon you to help, you will stand up and say "HINENI." There is a lot to be done. Let's all work together and make 2016 a great year.

Last but not least, I want to thank one individual in our community who has made and continues to make a significant contribution. In past articles, I have recognized a volunteer or community member who has gone above and beyond for Federation or another Jewish organization. This month I want to recognize former Social Services Director Amy Boulware, for how much she has meant to so many of us in this community. She has touched so many of our lives and has helped with untold numbers of community and family issues. Special thanks, Amy, and special wishes from this Board Chair. May your next journey be as meaningful.

My next step? To get YOU more involved in LEADERSHIP at the FEDERATION!



A Warm Baruch Haba, and a Fond Toda Rabah

by *Michael Dzik*
Federation Executive Director
mdzik@jewishchattanooga.com

Dear Rebecca,
In two short weeks you will be "on the job" as the new Social Services Director. Are you nervous? I

am. But I know you're going to be perfect!

I remember when our paths crossed many years ago. Amy asked if it was OK to have another social work intern from Southern Adventist University. The year before, undergraduate Kristy Kay had interned with Amy. But this time, Amy told me, it would be a graduate student. You may or may not know this, but Amy and I had a deal. I told her it had to be a special individual and the right fit for the Federation as well. I think we got it right!

Toward the end of your internship, I remember Amy advocating for you to join her at a social worker conference at the University of Kentucky. She said it was one of the best she had ever attended, and that she wanted you to go. I was able to get a student rate for you, and off you both went to Kentucky. I still remember how appreciative you were of the experience.

When Amy turned in her notice back in October, I was in shock. What was I going to do? Who could fill her shoes? And then I remembered you. "I wonder if Rebecca would be interested?" I asked her, and she called you. A week later you and I were having a conversation at Starbucks, and the rest, as they say, is history.

Sounds simple, right? The reality is that the Federation was still required to go through a candidate search. We received 16 resumes and interviewed seven excellent candidates. After all of the final interviews, the search committee told me to stop the process, and to "Go get Rebecca!" They recognized your caring, your knowledge, your good judgment, your wide experience, and your skill. They believed that you could keep us on this great path while adding your own new ideas to the department. They knew you were the perfect fit.

And so here you are, "filling the shoes" of your mentor. But really, Rebecca, I don't want you to be Amy. I don't want you to do the same things just because we've always done it that way. I want you to be yourself. Help us evaluate where we are and where we need to be and how we can get there. Will there be a learning curve? Absolutely. Will there be some changes along the way? Absolutely. But you have my 110% support. Similarly, you have 110% support from the Federation leadership as well. And I'm quite confident that the community is also behind you 110 percent.

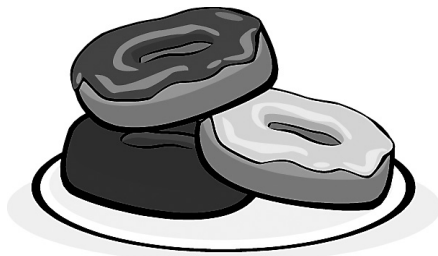
You going to hear things like, "Amy didn't do things like that." But remember, doing things differently — like Rebecca would do it — doesn't mean better or worse. It just means different. We will all learn from each other. You are a new personality, a different person. But what I do know is that you're

going to give 110% of yourself - your caring - to this community and everyone you serve.

Rebecca, I couldn't be more thrilled that we get to work together. You have a special flare and a special heart. You are caring and thoughtful and I look forward to getting to know you better. The community is ready. The staff is ready. I am ready. And I know you're ready too.

I look forward to officially welcoming you at the Annual Meeting on January 17, and to your first official day on January 18. By the way, staff meeting begins promptly at 9:30a.m. on the 18th — newest employee brings the Krispy Kreme doughnuts! See you then.

Michael



Dear Warren,

The time has flown by; your two years as Federation Board Chair comes to an official end on January 17 at the Annual Meeting. You've had a great run and many successes. You've pushed and challenged me on many fronts; hopefully I've done the same for you as well. I think it's been a nice partnership.

There has been a lot of good that's happened during your tenure. You've energized and engaged the Federation Board with more involvement and input. The Federation will begin a new leadership program in 2016 with your guidance and support (YESOD). Additionally, endowment work has progressed tremendously, as evidenced by the many new names added to the Legacy Society. In fact, we are completing a grant now to more formally work with our congregations in these endowment efforts. Aleph Bet has increased its enrollment and stabilized its finances. And Aleph Bet also has two incentive grants that both help and encourage Jewish families to send their kids to our preschool.

We laugh about it together now, Warren, but "you've come a long way, baby"! We've been on several trips to Israel together along with a CCD Mission to Moscow. We've travelled to the GAs in Denver and DC together. I'm sure 20 years ago this was not even on your radar screen! But I know that this journey has been meaningful to you — that you've learned and taken to heart the true mission of the Federation. I've witnessed you engage people on mission trips — the other volunteers and staff as well as the people who are directly impacted by our dollars. You get it and you care. You want to do more and encourage others to participate as well.

I know this isn't goodbye. I know you will remain an active part of the Federation. I appreciate our friendship and your willingness to have taken the leadership reins.

Michael

@JEWISH CULTURAL CENTER



The X Factor

by Ann Treadwell, Program Director
atreadwell@jewishchattanooga.com

My grandfather was a math teacher in addition to being a farmer and a high school principal. So part of my life has always included thinking through the “x-plus-y=? formula for life’s situations. For example if 1 child goes on an Xchange program to Israel and 4 teens from Israel come to Chattanooga and ask Y haven’t we done this more often, is that then = to creating a relationship between Israel and the United States? Or, does it = an opportunity to invest in more teens in the future?

Or if 4 Xchange teachers come to Chattanooga to learn about education, and we have 8 teacher candidates wishing to go to Israel next year, then Y don’t we have a stronger Jewish educator component at the Federation where teachers, regardless of type of venue, can share ideas? And does this = the hope for greater interest among educators in the future?

There are other kinds of X factors that I consider at the Federation. This January if 200 people come and are Xcited by Chai Nite and ask Y the Federation needs a fundraiser, does that then = the need for the Federation to be clearer about our needs in order to increase campaign giving? Or, does it = the desire for people to come to more fun events?

I need to Xplore ideas and share the Xploration with you. In 2016 the Foreign Policy Supper Club will be discussing the Middle East Alliance, The Rise of ISIS, The Future of Kurdistan, Migration, The Koreans, The United Nations, Climate Change, and Cuba and the U.S. I expect we will be asking Y on many occasions, and I wonder if the sum of our discussions will create change, either in individuals’ thinking or in our ability to take action.

In 2016 Xhibits at the Jewish Cultural Center will include a look at Y and how we like to celebrate Jewish life. Noa will Xplore the Points of You based on a project from the iCenter for Israel education. And, we will host an artist Xchange exhibit based on the Psalms. These are just a few of the events we have in store for you in 2016.

The Jewish Film Series committee has been diligently reviewing films. As usual you can Xpect some of the best current international films with at least a couple with tastY intentions (think brownies and hummus but not necessarily together). Stay tuned In FebruarY when you will receive the sponsor opportunity letter. Save these dates: March 16 will be the Sponsor reception. The regular series will include five consecutive films beginning on March 30 and concluding on April 27 (sorry no popcorn on the 27th but there will be a surprise!)

The bottom line: the programs at the Federation are here to make you question both the equation and the answer. The Federation is here to make sure that we are the sum of the diversity of our parts. Come, be Xcited and share Your wonder.



Chai Nite

Saturday, January 9 @ 7p.m. See front page for details.



Tuesday Cafe

Tuesday, Jan. 12 @ 12:00p.m. with Police Chief Fletcher

Cost: \$10. Email rsvp@jewishchattanooga.com, go to <https://www.jewishchattanooga.com/> or call 493-0270 ext. 10.

Annual Meeting

Sunday, Jan. 17 @ 7p.m. See front page for more information.



Tuesday Cafe

Tuesday, Jan. 19 @ 12p.m. RSVP \$10. Email rsvp@jewishchattanooga.com, go to <https://www.jewishchattanooga.com/> or call

493-0270 ext. 10.

Israel Education Program (Noa)

Sunday, Jan. 24 @ 2-5p.m, JCC. See page 9 for description. Cost: Email rsvp@jewishchattanooga.com, go to <https://www.jewishchattanooga.com/> or call 493-0270 ext. 31



Tuesday Cafe

Tuesday Jan. 26 @ 12:00p.m.

Cost: \$10. Email rsvp@jewishchattanooga.com, go to <https://www.jewishchattanooga.com/> or call 493-0270 ext. 10.

DRESSED: CALL FOR EXHIBIT SUBMISSIONS



This invitational group exhibit will focus on the theme *Dressed*. The concept of the exhibit is to explore dressing of any kind (think dresses, images of dresses, dressed up, fabric or not. Think about things that are covered or dressed...even food can be dressed!)

The piece(s) you submit for consideration in the exhibit can hang on the wall, be pedestal-based or an installation. However, due to the nature of the gallery area, we will need to know the installation requirements of each piece. If the size of the art work is over 48 inches in length or height, or weighs more than 100 lbs please make sure we know. All media will be considered.

Your work may be for sale or on loan.

The Jewish Cultural Center does not take commission on sales from exhibits and does carry

insurance on all work exhibited at the Center. The purpose of our gallery is to create conversations in the community. The exhibit will be mounted at the Jewish Cultural Center, 5461 North Terrace Road, Chattanooga. The exhibit will run February 4 – March 18, with a Meet-the-Artists reception on Thursday, February 4 at 5:30. All selected pieces must be at the Jewish Cultural Center by Wednesday, January 22.

How do you participate? Please send me electronic images of up to 4 pieces and list your materials and the size of the piece(s) no later than Wednesday, January 6. If you do not have electronic images of your pieces, please contact me at the address below to arrange an appointment for me to see your work.

We will select the work for the exhibit by January 8, 2016. If your work is chosen for exhibit, we will need additional information (bio., artist statement, inventory sheet) no later than January 22.

Want to check us out? We are a 501 c-3 organization and a United Way agency. Information about our organization can be found at www.jewishchattanooga.com. All services of the Jewish Federation of Greater Chattanooga are available to everyone regardless of religious affiliation

I hope you will consider being part of this exciting project. If you have suggestions of other artist’s work that should be considered, please let me know. If you have any questions or wish to confirm your participation, please contact me at 423 493-0270 ext. 13, or atreadwell@jewishchattanooga.com Respectfully,
Ann Treadwell, Program Director.

Jewish-style food, haimisha atmosphere
Catering for all events!

OPEN 7 DAYS

Sun.- Fri. 10:30-3:00

Sat. 10:30 to 5:00

tel 756-3354 (DELI)

fax 266-8646 (TOGO)



151 River Street
across from Coolidge Park

riverstreet-deli.com

Check our website for our daily menu

Take Home Chef Alice Goss-Morgan’s “Bowls of Love”

Purchase matzo ball soup or chili for just \$4 for a one-bowl container or \$8 for a two-bowl size. **Call ahead to reserve; we do run out.** Contact Ann Treadwell (do not call the kitchen) at 493-0270, ext. 13; or atreadwell@jewishchattanooga.com to get your order packaged and ready to go!



FEDERATION NEWS

Chai Nite 2016 Sponsorship Opportunities

Event Date: January 9, 2016, 7:30 p.m.

Jewish Cultural Center, 5461 North Terrace Road, Chattanooga

Kindly respond no later than January 5, 2016

Gold \$ 500.00

- Reserved table for 8 guests (There are a limited number of tables. This Sponsorship is available on a first come basis.)
- Recognition at the event
- One time, 1/16 Page Ad in the *Shofar*
- 8 Raffle Tickets

Silver \$ 250.00

- Recognition at the event
- 2 Entrance Tickets
- 4 Raffle Tickets

Bronze \$ 150.00

- Recognition at the event
- 2 Entrance Tickets

_____ /We are unable to attend, but please accept our donation to the Jewish Federation of Greater Chattanooga in the amount of \$ _____.

_____ /We would love to be a Chai Nite sponsor.

_____ Gold
_____ Silver
_____ Bronze

Contact

Name(s): _____

E-mail: _____

Phone: _____

Name for the Sponsorship Listing: _____

Individual tickets to the event are \$50 per person.
Raffle tickets are \$25 each, 3 for \$50, or 7 for \$100.

Please mail a check payable to the Jewish Federation (address above). To pay by credit card or for more information, please call the Federation's office at (423) 493-0270. To RSVP or pay online please visit www.jewishchattanooga.com.

Foreign Policy Supper Club Gearing Up for 2016



The Foreign Policy Supper Club is a weekly supper club that takes place at the Jewish Cultural Center Monday evenings at 6pm. Attendees are invited to read materials produced by the Foreign Policy Association as part of the great Decisions Series, and to share their ideas and thoughts. \$12 per person includes a hot meal and study materials. The FPSC is open to everyone but you must RSVP to 493-0270 or rsvp@jewishchattanooga.com.

2016 Foreign Policy Supper Club Schedule of Topics

February 29	Middle East Alliance
March 28	The Rise of ISIS
April 18	The Future of Kurdistan
June 27	Migration
July 25	The Koreas
August 22	The United Nations
September 12	Climate Change
November 28	Cuba and the U.S.

See how easy it is to join the Legacy Society!
Call Michael Dzik at 493-0270.

Join the Legacy Society

Allen, Amelia	Howard, Lynn
Alper, Maxine (Deceased)	Israel, David
Balser, Jeff	Jaffe, Dot
Binder, Claire	Jaffe, Sam
Bogo, Jerry	Lebovitz, Alison
Bogo, Rosalee	Lebovitz, Charles
Brooks, Ellyn	Lebovitz, Lauren
Brooks, John	Levine, Lawrence (Deceased)
Chambers, Sandy	Malsh, Rebecca (Deceased)
Cohen, Tal	Nash, Ike (Deceased)
Cohn, Herb	Oxenhandler, Barbara
Cohn, Sue (Deceased)	Pregulman, Helen
Diamond, Karen	Richelson, Alan
Dzik, Michael	Siskin, Pris
Fairchild, David	Winer, Elaine
Hochman, Lynn	Winer, Sanford
Hodes, Alvin	Zachary, Richard

The Legacy Society is made up of individuals who, in the tradition of our Jewish faith, wish to share their blessings with others by providing for the future needs of the Jewish community. There are a number of ways to contribute to the Jewish Federation's Endowment through estate planning: a bequest in a will, contribution of the remainder of an IRA or other retirement plan, a life insurance policy, charitable remainder trust, donor advised fund, charitable gift annuity, piece of real estate, securities or other property, or the donation of other assets. However they choose to contribute, Legacy Society members can be sure that their planned gift will turn their dreams for a strong future Jewish community into a reality. Join today. Call Michael Dzik, 493-0270 ext. 15 for more information.



Seeking Directors for Philanthropy Camp, Camp Tikkun Olam for Summer 2016

The successful candidates must be 25 or older, upbeat, have a current driver's license, and have camp and volunteer experience. Must be available to participate in planning meetings, to assist with training, and for a minimum of 52 hours between July 27 – August 5. Israeli teens, as part of the P2G exchange program, will be involved in each camp. Each camp director receives an honorarium for his/her service.

Philanthropy Camp is a nationally recognized one-week camp that introduces children in rising first through rising sixth grade to community service through day themed service models. There are six high school-aged counselors and a lead counselor to help manage the approximately 50 children in camp.

Camp Tikkun Olam runs concurrently with Philanthropy Camp and is for rising seventh through ninth graders. During the five-day camp, campers visit at least four non-profit organizations to provide half days of service. They also receive educational sessions about volunteerism, participate in hands-on activities, and create a presentation for younger Philanthropy Camp participants. Approximately 17 teens participate in camp. A college-age counselor serves as an assistant when camp is in session.

The camps are offered jointly by the Jewish Federation and Chattanooga First Church of the Nazarene.

For more information and to apply for the positions, contact Ann Treadwell at 493-0270, ext. 13 or atreadwell@jewishchattanooga.com.

CAMPAIGN NEWS

2016 Annual Campaign

Maccabi \$25,000 - \$49,999

Sarah and Jeff Lorberbaum

Kadima \$10,000 - \$17,999

Chazen Family

Lion/Herzl \$5,000 - \$9,999

Kandy Berke
Marvin Berke

Pomegranate \$1,800 - \$2,999

Sandra and Larry Zuckerman

Ben Gurion \$1,000 - \$1,799

Melanie Berson
Marilyn and Morton Center
Valerie and Leonard Chill
Cora and Ted Feintuch
Paula and Alan Jarman
Carol and Larry Young

Mensch \$500 - \$999

Alexis and Barry Bogo
Amy and Gene Boulware
Laureen Brock
Beverly and Steve Coulter
Barry Gold
Barry Parker and Flossie Weill
Yuppie and Harold Shavin
Mary and Jay Susman

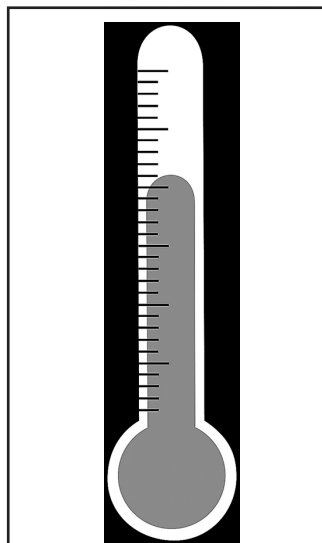
Aliyah \$250 - \$499

Iris and Lee Abelson
Wendy and Raul Beker
June and Robert Collins
Carol Berz and Charles Dupree
Nancy and Michael Brody
Yogi Center
Irene and Lester Cohen
Sherin and David Gottlieb
Susan and Bill Hillner
Mark Issenberg and Nona Martini
Lindy and Ron Johnson
Bonnie and Rick Marcus
Leslie McWilliams
Doris and Bob Streiter
Joe Winick

Chavarim \$1 - \$249

Jenni Berz
Helen and Edward Brody
James Brown
Sam Diamond
Rita and Leroy Fanning
Phyllis Ginsburg
Nancy and Harold Goldberg
Debra Goldblatt
Jay Goldblatt
Sharon and Joel Gollop
Kary Klein and Stephen Gordon
Gabrielle Halfin
Nikki and Wes Hasden
Harvey Jacobs
Marian Kern
Eugene Kleiman
Marilee and Joe Kodsi
Patricia and Ezra Lander
Carol and Bruce Lebovitz
Gail Lindsey
Edie Lipman
Ira Long

Pamela and Sam Lowy
Brenda and Terry Major
Art Marder and Cathryn Cohen
Teddi Mendel
Phyllis and Jed Mescon
Pamela O'Dwyer
Rosalee and Ken Opengart
Henry Poss
Rochelle Prigoff
Beverly and David Rice
Kim and Randy Roberts
Nicole and William Roberts
Rachel Sadowitz
Sylvia Saloshin
Daryl Thetford and Dana Shavin
Hadassah and Zev Shulkin
Marion Shuman
Janice and Dennis Smith
Judy and David Solovey
Jonathan Speal
Sharon Stratton
Beth and Johnny Walling



Campaign Goal:
1,118,000
Total as of 12/18:
\$1,033,505



2016 Board of Directors

Terms expiring January 2019

David Israel Rob Lowe Erica Newman
Amelia Allen Mike Spector Cara Weiner

Terms expiring January 2018

Austin Center Tal Cohen Karen Diamond
David Fairchild Caroline Kaplan Alison Lebovitz

Terms expiring January 2017

Julie Cowan Izzie Frumin Adam Green
Rachel Privett Arvin Reingold Elaine Winer

One Year Board Chair Appointment

Barbie Potts

Executive Committee Members

Lee Brouner	Board Chair
Scott Israel	Treasurer
Kevin Rose	Asst. Treasurer
Robin Balser	Secretary
Fern Shire	Member-at-Large
Alan Richelson	Member-at-Large
Roy Rosenfeld	Member-at-Large
Lauren Lebovitz	Member-at-Large
Andy Hodes	Member-at-Large
Alison Lebovitz	Member-at-Large
Warren Dropkin	(Immediate Past Board Chair)

Thank you to our Board Members Rolling Off

Barbara Oxenhandler
Amy Snetman
Sandy Tabakin

The Many Faces of Endowing

Did you know there are many creative ways to make an endowment to our Federation? Here are just a few:

Bequest: The most common form of deferred giving, an outright charitable bequest, is made through terms of a will.

Retirement Account or IRA:

Any funds remaining in an Individual Retirement Account (IRA) or other type of retirement plan may be taxed substantially after your death and/or that of your spouse. Taxes due on your retirement plan may be avoided by naming a charity as the beneficiary of your plan.

Life Insurance Policy:

You can donate a new or previously existing life insurance policy to the Jewish Federation. Life insurance policy donations can increase income tax deductions while decreasing your taxable estate.

Charitable Gift Annuity (CGA):

In exchange for a gift to a charity, the charity provides a specific income for life for up to two individuals, which may include the donor.

Charitable Remainder Trust:

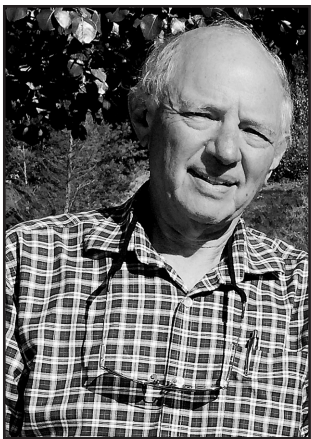
You can establish a fund in your name or that of your family through several types of remainder trusts tailored to meet your estate planning goals and the needs of your beneficiaries

Charitable Lead Trust:

The income is paid to the Jewish Federation for a fixed or determined period with the remainder either returning to you or passing to a beneficiary. If you do not need the income produced by a certain asset while you are living, you can consider creating a Charitable Lead Trust. The income is paid to the Jewish Federation for a fixed or determined period with the remainder either returning to you or passing to a beneficiary.

For more information about these and other kinds of "planned gifts," contact Federation Executive Director Michael Dzik at 493-0270.

FEDERATION NEWS



Preserving the Jewish Experience

by *Max D. Brener,*
Chairman, Jewish Archives of Chattanooga

A member of the community recently came into the Jewish Cultural Center and said, "I heard that you were making oral history videos. What are you doing? Why haven't you asked to do a video of me?"

The Jewish Archives of Chattanooga became part of the Federation almost 18 months ago. As a priority the members of the Archives Committee wanted to create oral history videos of some of the Jewish community's elders.

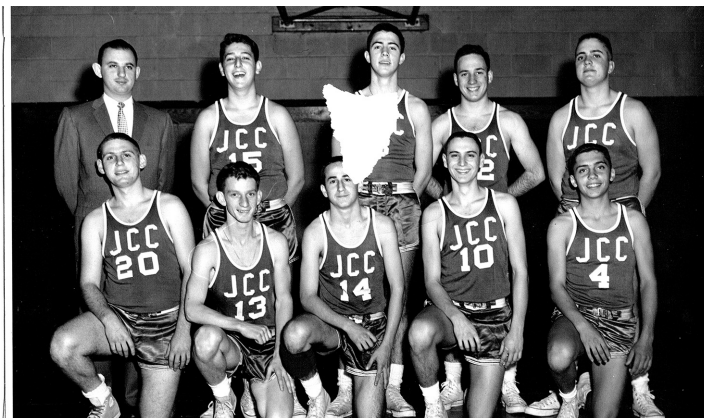
Selection of people to interview was based on the amount of family longevity in the area, health and welfare of the person to be interviewed, contributions to the community, and personal or family histories of significant interest. To date, the Archives have recorded twenty seven interviews and have several more in various stages of preparation.

The following persons have been interviewed: Joy Adams (Archives founder), Marvin and Ronnie Berke, Bob Berz, Max Brener, Perry Brickman, Marilyn Center, Gary, Bobby, and Steve Chazen, Herb Cohn, Reuben Dubrow, Ted Feintuch, Irv Ginsburg, Ival and Doris Goldstein, Howard and Yetta Gropper, Alvin Hodes, Norman Hofferman, Sam Jaffe, Paul Lefkoff, Howard Levine, Ira Long, Jay and Marcia Menuskin, Robert Siskin, Jim Stoloff, Herman Trotz, and Sanford Winer.

Why is it important to document these histories and personal stories? What is this project supposed to accomplish? The Chattanooga community has a rich history of accomplishments from the establishment of 911 service in Chattanooga, to the founding of Orange Grove School – the region's first school for children with special needs – to creating the Siskin Foundation, which established the Siskin Hospital for Physical Rehabilitation, one of the finest in the country. Chattanooga is also home to the first female lawyer in Tennessee to argue a case in front of the Supreme Court. And this is just to name a few of our community members' accomplishments. The creation of Jewish identity in a community such as ours depends on knowing the legacy our accomplishments are built on.

Do you or does anyone you know have a personal story or family that should be recorded? Or are you interested in helping the committee facilitate the completion of the oral histories by either working on the logistics or by interviewing? If so, please contact me at 875-8316 or 9westiover@gmail.com.

The mission of the Jewish Archives of Chattanooga, a program of the Jewish Federation of Greater Chattanooga, is to collect, document, preserve, and protect the records of the Jewish experience in the greater Chattanooga, Tennessee, area.



Above: *Late 1950s. L to R (front): Jerry Sear, Nathan Pearlman, unknown, Ben Tyber, unknown. Back: Izzy Frumin, Marty Halper, Manny David, Paul Greenberg, Marshal Center*



Junior Midjun All Stars Back Row: (left to right) Bobby Berz, Charles Lebowitz, Marvin Berke, Coach "Shimmy" Berman, Morton Slutsky, Leonard Morris, Manager Mickey Banks.
Front Row: (left to right) Maxwell Eidex, Frank Hite, Edwin Pearlman, Marshall Eidex.
May 1951



A Women's Mission

Feb 7, 2016 to Feb. 11, 2016

TRAVEL WITH US TO THE HEART OF ISRAEL

Join smart, motivated, like-minded women on Heart to Heart 7, a journey that will fill your soul, open your mind and renew your spirit. Find meaning in your Jewish community through an incredible experience that will change your life.

Spend two nights in Tel Aviv and two nights in Jerusalem. Experience the unbelievable sights, projects and developments taking place in modern Israel. Meet Israeli women who work at the highest levels of business, government, technology, science, military, the arts and fashion. Participate in a hands-on service project with children in Tel Aviv, become a master chef in a cooking competition, rule the roads on a jeep adventure in Israel's south, and enjoy home hospitality with Israeli women who are just like you!

For more information about the mission, please contact Michael Dzik at 493-0270 ext. 15 or visit <http://jewishfederations.org/calendar/heart-2-heart-womens-mission-to-israel-2016>.

The 9th Annual Jewish Film Series Begins March 16

In Search of Israeli Cuisine



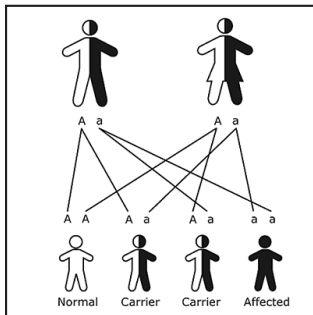
Chef Michael Solomonov talks Israeli Cuisine with Meir Adoni at his Mizlala in Tel Aviv.

The 9th Annual Film Series is almost here! Mark your calendar for Wednesday, March 16, when we will kick off with our Sponsor Event and a screening of *In Search of Israeli Cuisine*, a documentary film by Roger Sherman, which he calls "A portrait of the Israeli people told through food."

Watch for sponsorship information in the February *Shofar*. For more information call Ann Treadwell at 493-0270 ext. 13.

SOCIAL SERVICES

Genetic Screening Coming to JCC



In previous articles we discussed sporadic cancer, hereditary causes of cancer such as mutations in either BRCA1 or BRCA2, causative of Hereditary Breast and Ovarian Cancer (HBOC) syndrome, and how genetic testing is performed. In this month's article, we will focus on the types of test results received after electing to pursue genetic testing.

As you may recall, when genetic testing is performed, a certain page (gene) or pages (genes) are reviewed to determine if there are any genetic changes, or mutations that can increase an individual's risk for a specific types of cancer or cause specific medical conditions.

As was mentioned at the end of last month's article, there can be one of three different test results given after testing is complete: positive, negative, or uncertain. So while we may wish for yes or no answers to risk, or a test to tell an individual all of the medical conditions one may be at risk for, it simply isn't that easy, nor is any test that comprehensive.

To explain further, let's re-visit our sentence: "The hat is red." And let's suppose during testing we find a genetic change and the sentence now reads, "The cat is red." The "c" has replaced the "h", and is, therefore, a genetic change.

If this genetic change is associated with a genetic condition, this is called a mutation. The change is considered deleterious, or damaging, to the gene's function and is reported as a "positive" result. If this was a positive genetic test in BRCA1, which causes HBOC syndrome, the individual tested is at an increased risk to develop certain types of cancers, and at an earlier age, than individuals in the general population without a mutation. Nevertheless, keep in mind this doesn't mean the individual will absolutely be diagnosed with any of these cancers in their lifetime; rather, their risk is increased.

Conversely, if this genetic change occurs with regularity in the general population, it is known as a polymorphism. This means the change was noted in individuals with and without the medical condition, therefore it is not associated with disease or risk and is reported as a "negative" genetic test result. In the instance of HBOC syndrome, a negative result means that an individual is not at increased risk to develop the specific types of cancers associated with HBOC syndrome. It does not mean an individual will not be diagnosed with any of the types of cancers associated with HBOC syndrome. Every individual has a risk of cancer, and factors including personal and family history, lifestyle and other genetic changes can influence this risk.

On the other hand, what if the scientific community hasn't seen this change before? Or doesn't have enough information or data to say whether it is or isn't associated with risk and/or disease? These changes are referred to as a variant of uncertain significance (VUS) and often can be the most frustrating types of test results. Essentially, it remains unclear whether an individual is at an increased risk or not.

For example, if a VUS is returned for BRCA1 (associated with HBOC syndrome), an individual may or may not be at an increased risk for specific cancers. Unfortunately, in these instances, the result itself is irrelevant and an individual is further managed based upon their personal and/or family history of disease.

Laboratories may re-visit these VUS results, typically annually, and if additional information is available may reclassify it as "positive" or "negative" and issue an amended report. However there is no guarantee if or when this may happen for any given result.

VUS results are returned in approximately 3-5% of all BRCA1 and BRCA2 testing. However, when genes that are less studied or known are tested, or larger panels of genes interrogated, the likelihood of a VUS result increases, upwards of 50%.

And what of other conditions? Tay-Sachs disease, caused by mutations in the gene HEXA, is inherited in a recessive manner. This means a carrier has a genetic mutation in just one of their two HEXA genes. An individual with Tay-Sachs has two genetic mutations, one on each HEXA gene. In the instance of carrier screening, most laboratories performing carrier screening do not report out VUS results, only "positive" or "negative" results. Therefore, if an individual screens negative to carry Tay-Sachs, it is important to note that this does not mean no risk, it simply means a very low risk.

Consequently, it's important to know a little bit about the laboratory used for testing. Some testing laboratories will only report out positive and negative results. Meaning a VUS may still be noted during testing, but not reported.

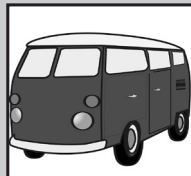
And finally, genetics is always evolving. We are learning new

causes of medical conditions at a rapid pace, and there still remains much to be known about the known causes of many diseases. Therefore, a negative test result never guarantees an individual has no risk to develop a specific medical condition or be a carrier for a genetic condition. It simply means the risk is greatly reduced.

And these nuances may complicate the choice of whether or not an individual pursues genetic testing. In upcoming articles, we will explore the benefits and limitations of genetic testing and these considerations.

**Screening date:
Sunday Feb. 21**

Van Schedule



Monday and Wednesdays
Rick Jacobs 432-2222
Tuesdays and Thursdays
John Schneider 504-6324

Additional Driver Eddie Reel
(423) 503-0238



About PJ Library:

PJ LIBRARY IS A JEWISH FAMILY ENGAGEMENT program implemented on a local level throughout North America. Participants receive high-quality Jewish children's literature on a monthly basis. Families raising Jewish children from age six months of age eight years (depending on the community) are encouraged to enroll at www.pjlibrary.org. PJ Library in Chattanooga is sponsored through the generosity of the Harold Grinspoon Foundation, the Jewish Federation of Greater Chattanooga, Aleph Bet Children's Center, and Diagnostic Pathology Services, P.C.



Manorhouse

Assisted Living



**Call Lisa
Jarvis today
to schedule a
tour!**



Licensed Nurses on staff, 24 hours a day



Elegant homelike atmosphere with two full-time activity directors



Upscale "restaurant style" dining experience



Exceeding our residents' expectations in a unique and outstanding way since 2000



For more information or to schedule a tour & lunch, call

Lisa Jarvis, CSA

(423)870-5900 or (423)504-1240



ALEPH BET CHILDREN'S CENTER



aleph bet
CHILDREN'S CENTER
by Vicki Cathcart
Aleph Bet Children's Center
Director/PJ Library Coordinator
alephbet@jewishchattanooga.com



We are so fortunate to have so many people donate supplies for Aleph Bet. For your convenience, Aleph Bet Children's Center has set up a wish list on Amazon.com. Go to Amazon.com/wishlist and type in Aleph Bet. It's easy to see what we wish for!

Special Visitors and Chanukah Celebrations in December

Thank you to Helen Smith, the P2G Educator Delegation, Jacob and Alex Newton, and Barbara Oxenhandler.



Learn and Play with Us!



Aleph Bet will begin priority registration Jan. 19 for currently enrolled and alum families. Interested in receiving enrollment information for summer 2016 and the 2016-2017 school-year? Call us! 893-5486 or email alephbet@jewishchattanooga.com.



DONATIONS

The Weitz Family-Chanukah tattoos
The Cathcart Family-Soap and bamboo letters
The Thatcher Family-School supplies bags for each classroom



HAPPY BIRTHDAY!

Samara and Daniella
Juniper
Rylie
Ella S.
Aaron
Avery
Violet
Emberleigh

Birthday Tributes: donations were made to AB in honor of the following birthday boys and girls. Thank you!



Aleph Bet Children's Center, a program of the Jewish Federation of Greater Chattanooga, aims to provide an educational, interactive and developmentally appropriate preschool program that is enriched by Jewish traditions and values and implemented by a trained, dedicated, and nurturing staff.

Aleph Bet is recognized by the State of Tenn. for its commitment to good health

At the Jewish Cultural Center / 5461 North Terrace Road 37411
(423) 893-5486 / Director: (423) 493-0270, ext. 18
alephbet@jewishchattanooga.com / www.aleph-bet.com

A gift for you... that will last a lifetime!

Your child may be eligible to receive a gift voucher up to **\$2,400** to attend Aleph Bet Children's Center this school-year!*

Apply at www.aleph-bet.com or call 893-5486 for more information.

Jewish Early Childhood Initiative—Chattanooga funding generously provided by the Lebovitz Family Charitable Trust and private donors. The Jewish Right Start Program matching funding provided by the National Jewish Right Start program, an initiative of the Jewish Federation of Metropolitan Chicago, made possible through the generosity of local donors.

* see application for specific eligibility requirements.



FEDERATION SHLICHA



Putting Together the Israel Puzzle One Piece at a Time

by Noa Hadad, Federation Shlicha
Israel@jewishchattanooga.com



P2G Exchange Teachers, l-r Haiyta, Amit, Oshrit and Timor

Between Dec 4 to Dec 10 we hosted in Chattanooga 4 teachers from Israel: Haiyta Nuriel, Amit Shacham, Oshrit Tanami, and Timor Lipker Dagan. They all live in our partnership area, Hedera-Iron. They stayed with four P2G-

families from the community: the Sadoffs, the Matzkins, the Cohens and the Weisses. We took them around town to learn about our Jewish educational system (Hebrew schools, CJCRS, Aleph-Bet and Federation programs) and about the Chattanooga local educational system. This kind of program is one reason I joined the Shlichim Program. I don't think that the shaliach's job is to convince people to make aliya to Israel, but I do believe it is to build a living bridge between local communities and Israel. How? By making REAL connections. By meeting REAL Israelis. This makes people want to know more about the person and about Israel; it makes them want to work together, and to keep in touch. I really believe that these small things make a difference.

I talked with the host families (Jon and Amy Cohen, Dennis and Susan Matzkin, Rabbi Tendler and Ross Sadoff, Randi and Jeffery Weiss) and the teachers, they all said they had once-in-a-lifetime experience. They all want to visit each other again and keep in touch, and to do something together with their classes and help each other, even from far away. Special thanks to Lynn Howard, who helped make this program so powerful for our community and for the teachers. I encourage each one of you to take part in our P2G program – host someone, go to Israel, be active in our P2G committee. We have teachers, teens and young adult exchange programs. The connections make a difference.

Hebrew with Noa Semester II

Starts January 12

For more information or to register:
Israel@jewishchattanooga.com
or call 493-0270 ext. 31

DID YOU KNOW?

The Shlichim Program is made possible through your donations to the Jewish Federation Annual Campaign.



Israel's Puzzle: January 24, 2PM-5PM.



Aharon Barak

Part of my job is to bring Israel to you. I'm trying to make programs which reveal pieces of the Israel puzzle. This month we will deal with judicial activism in Israel. As most of you know I worked at the District Court in Jerusalem for 2 years, in the security system. During my work there, I met a lot of fascinating people. One of them was Aharon Barak, the head of the Supreme Court in Israel.

The Supreme Court is involved in defending and shaping the Jewish and democratic identity of the State of Israel. The constitutional revolution in Israel began in 1992 with the legislation of two basic laws: Human Dignity and Liberty. According to the approach of the former revolutionary head of the supreme court, Aharon Barak, which was adopted by the Supreme Court, the Constitutional Revolution brought values such as the Right to Equality, Freedom of Employment and Freedom of Speech to a position of normative supremacy, and thereby granted the courts the ability to strike down legislation which was inconsistent with the rights embodied in the Basic Laws.

In this month's program we will discuss the clash between regular laws and the basic laws that were brought to the Supreme Court and reshaped the identity of Israel as a Jewish and democratic state. The program will be called Israel's Puzzle and it will be divided into 5 parts: 1) Introduction; 2) Watching the movie: *Aharon Barak - The Judge*; 3) Special speaker: Rotem Malach; 4) Round Tables discussion (lead by shlichim from the area); and 5) Conclusion.



Rotem Malach

SPECIAL SPEAKER ROTEM MALACH

Rotem currently works as the central emissary in North America for the World Zionist Organization Department of Diaspora Activities. He is both an attorney and a teacher. He is the Prior Founder and Board Member of LSD (Let's Start Davening), an alternative grass roots community in Berlin, Germany. He is also an Education Consultant at "Tlaim" group, and co-developed an alternative evaluation plan for the National Civics Exam in

Israel. Malach is the author of *The Democratic Citizen*, a civics textbook used in Israeli schools, a pioneer and mentor at "Teach for Israel", an educational project whose goal is to encourage talented youth and to have them integrated as teachers into the Israeli school system.

I hope I will see y'all at this unique opportunity to learn about Israel, just another piece in Israel's Puzzle. I would love to hear your point of view, how it connects to you as individuals and to the United States. Please join us. RSVP Federation@jewishchattanooga.com or 423-493-0270.

Young Jewish Leadership (Ages 21-45)



Find us on facebook
facebook.com/groups/YJL-CHA/ or email us to get on the mailing list at Israel@jewishchattanooga.com .

WEBSITE: <http://www.Jewishchattanooga.com>
423-493-0270

DID YOU KNOW?
Your campaign dollars help fund Young Jewish Leadership!



Chai Nite is Jan. 9
Details front page



YJL Shabbat and Chanukah party, Dec. 11 (l-r Noa Hadad, Tal Cohen, Rebecca and Jordan Parker, Sarah Brook, Larry Gellar Rob Lowe and daughters. Behind Sarah: unidentified guests

Bowling at Southside Social Nov. 14. (Rob Lowe, David Shcheinberg, Josh and Bethany Schklar, Sarah Brook, Larry Gellar, Holly Dyer, Hannah Beker, and Nicholas Mahan)

FEDERATION PROGRAMS

JEW CREW

GIVING BACK is the Reason for the Season

The Jew Crew ended 2015 with back-to-back programs centered around “giving.” In November we had an interactive and engaging program led by Amy Boulware that exposed the Crew to the challenges that our senior neighbors face every day, and the way our Jewish Federation supports them. We then assembled mitzvah meals (boxes of Alice’s desserts) and delivered them to community members. While delivering boxes, we had the opportunity to visit and share in the Thanksgiving spirit.

In December, we had a record 20 people at our annual Chanukah Party and White Elephant gift exchange, complete with Chef Andy Hodes’ homemade latkes and Noa Hadad’s splendid sufganiyot (jelly-filled doughnuts).

We look forward to seeing everyone at our 2016 programs, including our Jew Crew Retreat to Camp Ramah Darom the weekend of February 5-7.

DID YOU KNOW?
Your campaign dollars help fund the Jew Crew!



YOUR COMPANION

Our elder law team, led by **Dana Perry**, now features Licensed Advanced Practice Social Worker **Amy Boulware**. Our entire team embraces your point of view and anticipates your family's challenges and needs to best serve your aging love ones.

CHAMBLISS

ATTORNEYS AT LAW

423.756.3000

fiercely loyal.

chamblisslaw.com

